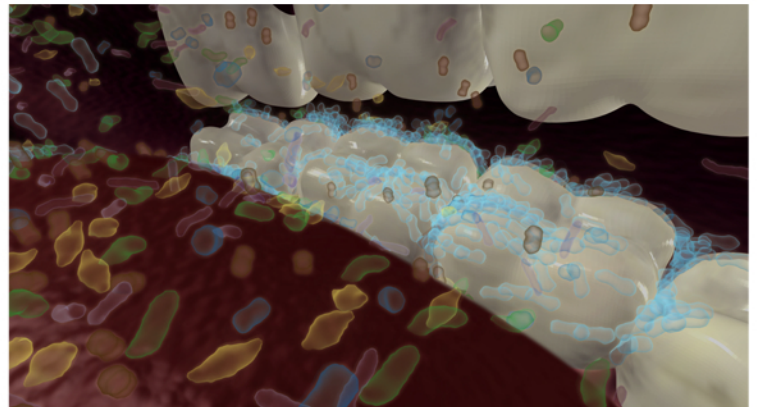




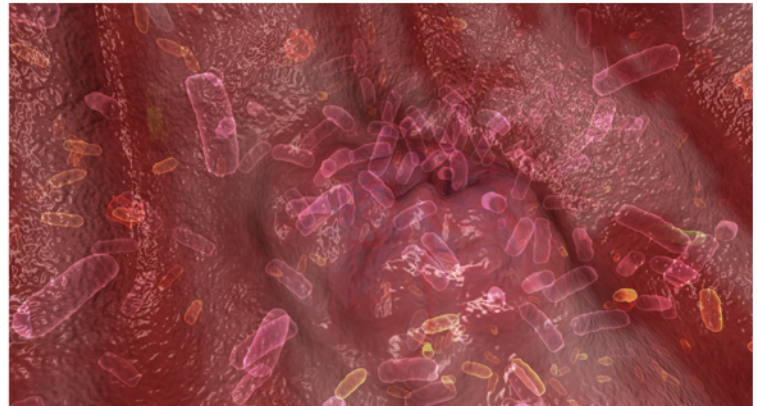
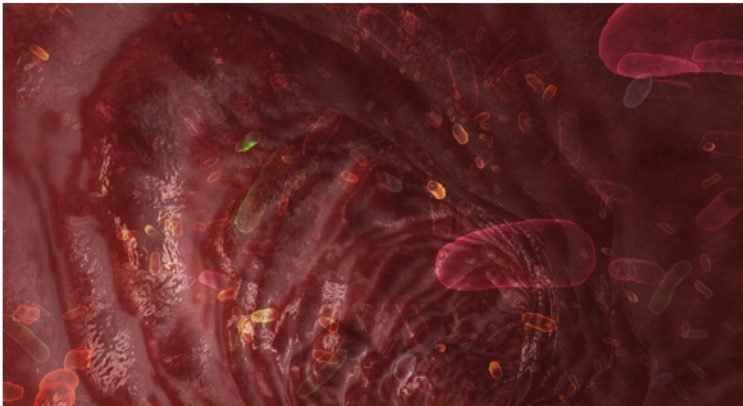
machine graphics

Smithsonian Museum of Natural History

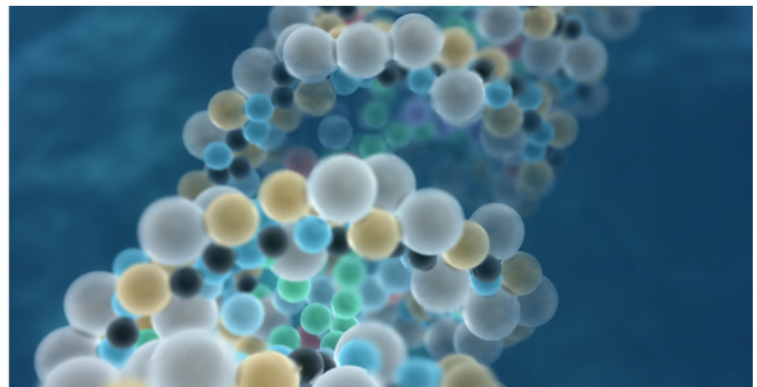
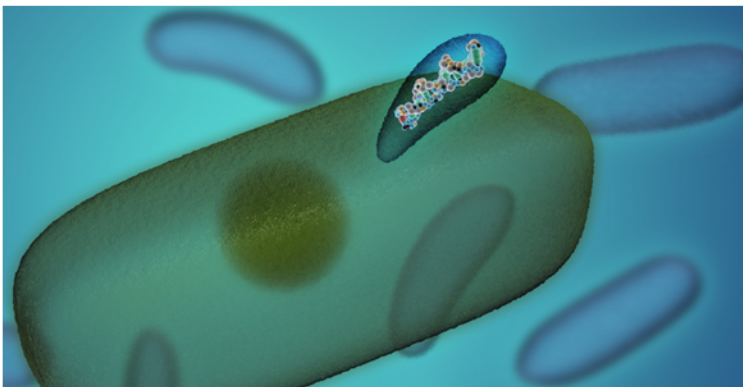
Four short films profiling scientists who have contributed to advancements in genetic engineering. The video plays as a continuous loop and is part of an exhibit featuring the pioneers of DNA research and biotechnology.



We created a fly-through of the digestive tract, where we observe the multitudes and variety of microbes which populate our insides. Starting in the mouth, we see bacteria as the cause of tooth decay.



As we enter the stomach, we focus on bacteria swarming over an area which becomes an ulcer. The models of the intestines were created with ZBrush software.



Another animation shows the use of bacteria to deliver genetically modified DNA into the nucleus of a plant cell, which can then produce alternative fuels. Above right, DNA strands created with Maya's nParticle system.